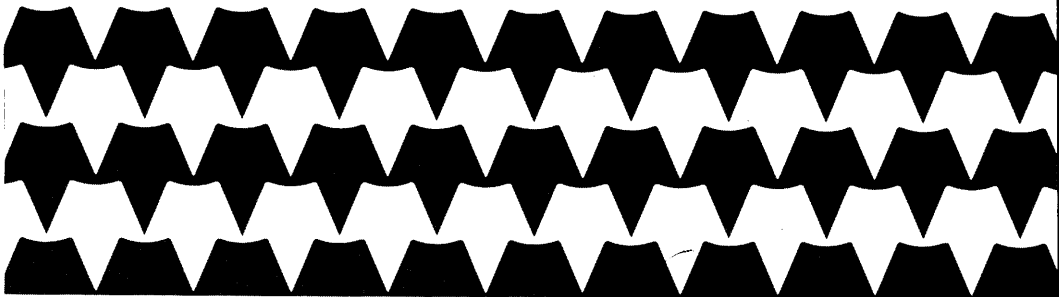


Tandy 1000 EX

3½" 720K

External Disk Drive

Installation Guide



TANDY®

The FCC Wants You to Know

This equipment generates and uses radio frequency energy. If not installed and used properly, that is in strict accordance with the manufacturer's instructions, it may cause interference to radio and television reception.

It has been type tested and found to comply with the limits for a Class B computing device in accordance with the specifications in Subpart J of Part 15 of FCC Rules, which are designed to provide reasonable protection against such interference in a residential installation. However, there is no guarantee that interference will not occur in a particular installation.

If this equipment does cause interference to radio or television reception, which can be determined by turning the equipment off and on, the user is encouraged to try to correct the interference by one or more of the following measures:

- Reorient the receiving antenna
- Relocate the computer with respect to the receiver
- Move the computer away from the receiver
- Plug the computer into a different outlet so that computer and receiver are on different branch circuits.

Warning

This equipment has been certified to comply with the limits for a Class B computing device, pursuant to Subpart J of Part 15 of FCC Rules. Only peripherals (computer input/output devices, terminals, printers, etc.) certified to comply with the Class B limits may be attached to this computer. Operation with non-certified peripherals is likely to result in interference to radio and TV reception.

5/86

Tandy 1000 EX 3 1/2" 720K External Disk Drive Installation Guide:
Copyright 1986, Tandy Corporation
All Rights Reserved.

Reproduction or use, without express written permission from Tandy Corporation and/or its licensor, of any portion of this manual is prohibited. While reasonable efforts have been taken in the preparation of this manual to assure its accuracy, Tandy Corporation assumes no liability resulting from any errors or omissions in this manual, or from the use of information contained herein.

10 9 8 7 6 5 4 3 2 1

Tandy is a registered trademark of Tandy Corporation.

MS-DOS is a registered trademark of Microsoft Corporation.

Installation

Adding Tandy's 720K External Disk Drive to your computer as a secondary disk drive significantly increases the amount of disk storage. This 3½" floppy disk drive supports all standard MS-DOS® version 2.11.24 and ROM BIOS commands and uses the 3.5-inch, 80-track microfloppy diskettes.

- **720K bytes formatted storage, 1M byte unformatted**
- **Uses 3½", double-sided, double-density diskettes**
- **Connects to computer via a cable**
- **Front loading, horizontally-mounted**

The external disk drive connects directly to your computer by the cable from the drive's rear panel.

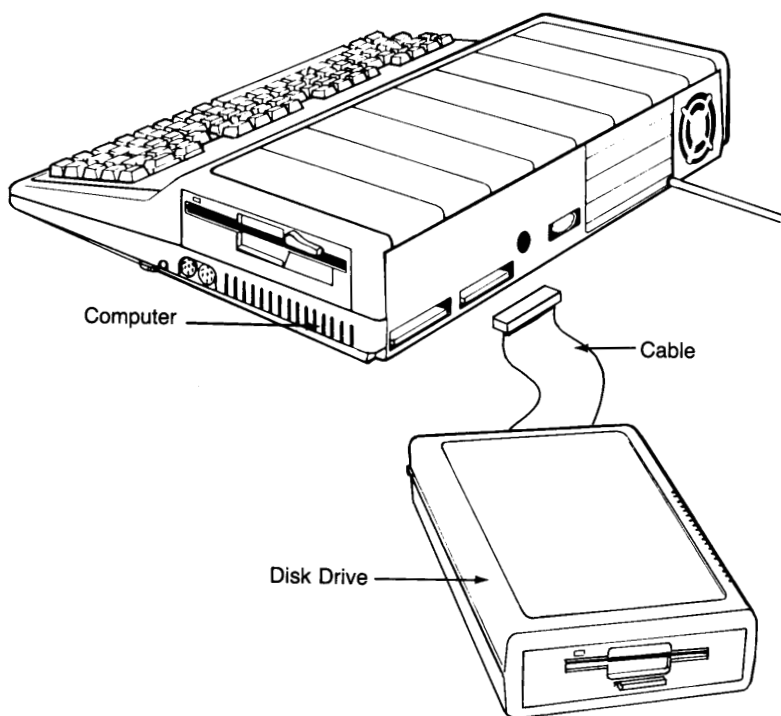


Figure 1. Disk Drive-to-Computer Connection

Connecting the Disk Drive

Caution should be exercised when using the disk drive in low humidity environments to prevent damage to electronic parts by static electricity being discharged through them. Before proceeding further, discharge any static electricity build-up by touching a grounded metal object.

1. **Turn off power to all equipment.** Disconnect the power cord from the electrical outlet. If the computer is on, you could damage the central processing unit, as well as your external disk drive.
2. Connect the external disk drive's cable to the **EXTERNAL DRIVE** connector on the rear panel of the computer and to the disk drive.

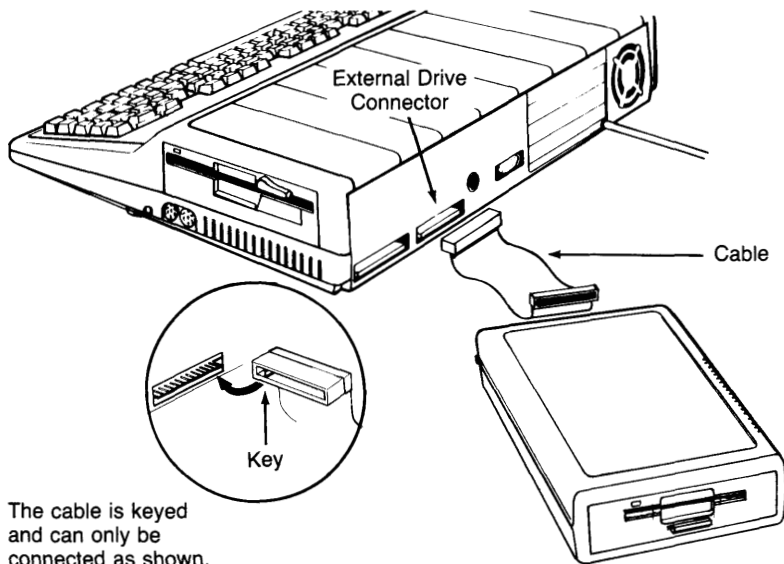


Figure 2. Connecting the Disk Drive

Your new external disk drive is now ready for operation with your computer.

Inserting the Diskette

Storing your files on diskettes gives you unlimited data file storage space. The disk drive uses a 3½", soft-sectored, double-sided, double-density, 80-track microfloppy diskette (Radio Shack Cat. No. 26-417 or 26-418).

1. Follow the instructions in your computer operation manual for powering up the system.

Cover the **write-protect notch** (square hole in the upper right corner) on the **diskette** when you want to save or change information on the diskette. Otherwise, the disk drive cannot write (change information) on the diskette. Move the small **tab** (normally red or black) **down** to write-enable the diskette or move it **up** to write-protect.

2. Insert the diskette with the **label side** up into the disk drive **insertion window**.

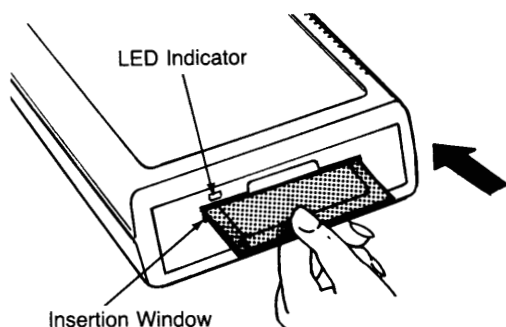


Figure 3. Inserting the Diskette

The **LED indicator** will light while the drive is in use. Push in the **eject button** below the insertion window to remove the diskette.

Before turning off power to the system, be sure to remove the diskette. Leaving it in the drive may result in loss of the contents of the diskette.

For instructions on using **data diskettes**, **making backups** and **formatting a diskette**, refer to the first part of *A Practical Guide to the Tandy 1000 EX*.

Accessing Information

Information can be accessed from your secondary disk drive and copied to the 5¼" internal drive of the computer.

To access the secondary drive, give the drive reference in the command or pathname. For example, you might type:

dir b: or

b:\program

A special function key is used to boot a diskette in the secondary drive which is designated as **Drive B**. Press F3 during bootup after you hear the beep to swap drives and change the secondary drive's reference to **Drive A**.

For details on using software with your disk drive, refer to the first part of *A Practical Guide to the Tandy 1000 EX*.

Care and Maintenance

Your disk drive is designed to be free from periodic maintenance when it is operated within normal operation duty.

- Five-year design component life
- MTBF (mean-time-between-failure) equals 10,000 hours or more with power on for typical usage

It is recommended that you clean the magnetic head with a cleaning disk to maintain reliability of the data.

If some of the parts in the disk drive are operated at a specially heavy-duty condition, or if it is operated over 5 years, it is recommended that you have the unit serviced by a qualified Radio Shack technician.

Do not apply excessive impact or drop the disk drive on the desk.

When Something Goes Wrong —

Soft (read, write, seek and interchange) errors are often mistaken for errors caused by problems or misadjustments of the disk drive. Be sure to check the following before returning the disk drive to a Radio Shack service facility for repair:

1. Proper operational or programming procedure is followed.
2. Diskette is not damaged.
3. Disk drive or diskette is not exposed to dust in the air, random electric interference or other external cause.

If you do not find a damaged part on visual inspection, check whether the error is repeated on the current diskette or whether the same error results with another diskette.

Specifications

Performance

Data capacity	1M byte, unformatted 720K bytes, formatted
Access time	
Average access time	94 msec.(including 15 msec. settling time)
Track-to-track	3 msec.
Motor start time	Less than 400 msec.
Disk speed	300 rpm
Average latency	100 msec.

Physical/environmental

Interface cable	30-pin, card edge (keyed)
Power requirement	
DC, +12V	
Voltage tolerance	Read/write operation: Less than $\pm 10\%$ Others: Less than $\pm 10\%$
Allowable rippled voltage	Less than 200mVp-p (including noise)
Operating current consumption	105mA, typical average (using a disk of typical running torque) Less than 180mA, max. avg. (using a disk of maximum run- ning torque) Peak: Less than 230mA (400 msec., maximum at spindle motor start)
Waiting current con- sumption (spindle motor off)	0.2mA, typical 0.5mA, maximum

DC, +5V

Voltage tolerance	$\pm 5\%$
Allowable ripple voltage	Less than 100mVp-p (including noise)
Operating current consumption	170mA, typical average Less than 200mA, max. avg. Peak: Less than 240mA
Waiting current consumption	4mA, typical Less than 6.8mA, maximum

Power consumption

2.11W, typical operating
22mW, typical waiting

Operating temperature

55°F to 85°F (12.8°C to 29.4°C)

Humidity

Operating environment	90% relative humidity (non-condensing)
Storage	90% (non-condensing)

Dimensions

2.55"H x 6.54"W x 11.2"D
(64.8mm) x (166mm) x (285mm)

Weight

3.7 lbs. (1.68 kg.)

SERVICE POLICY

Radio Shack's nationwide network of service facilities provides quick, convenient, and reliable repair services for all of its computer products, in most instances. Warranty service will be performed in accordance with Radio Shack's Limited Warranty. Non-warranty service will be provided at reasonable parts and labor costs.

**Addendum to
Floppy Disk Drives
25-1060 and 25-1061**

Your new 3½" or 5¼" disk drive cable assembly might have a single ground wire (with a connector) on one end only. If so, plug the connectors on this end of the cable assembly into the disk drive. Plug the metal covered connector on the other end of the cable assembly into your computer.

If your computer has a single ground wire (with connector) extending from the back, simply ignore it.

Your new drive will perform properly with the enclosed drive cable.

875-9414

TERMS AND CONDITIONS OF SALE AND LICENSE OF TANDY COMPUTER EQUIPMENT AND
SOFTWARE PURCHASED FROM RADIO SHACK COMPANY-OWNED COMPUTER CENTERS, RETAIL
STORES AND RADIO SHACK FRANCHISEES OR DEALERS AT THEIR AUTHORIZED LOCATIONS

LIMITED WARRANTY

I. CUSTOMER OBLIGATIONS

- A. CUSTOMER assumes full responsibility that this computer hardware purchased (the "Equipment"), and any copies of software included with the Equipment or licensed separately (the "Software") meets the specifications, capacity, capabilities, versatility, and other requirements of CUSTOMER.
- B. CUSTOMER assumes full responsibility for the condition and effectiveness of the operating environment in which the Equipment and Software are to function, and for its installation.

II. LIMITED WARRANTIES AND CONDITIONS OF SALE

- A. For a period of ninety (90) calendar days from the date of the Radio Shack sales document received upon purchase of the Equipment, RADIO SHACK warrants to the original CUSTOMER that the Equipment and the medium upon which the Software is stored is free from manufacturing defects. **This warranty is only applicable to purchases of Tandy Equipment by the original customer from Radio Shack company-owned computer centers, retail stores, and Radio Shack franchisees and dealers at their authorized locations.** The warranty is void if the Equipment or Software has been subjected to improper or abnormal use. If a manufacturing defect is discovered during the stated warranty period, the defective Equipment must be returned to a Radio Shack Computer Center, a Radio Shack retail store, a participating Radio Shack franchisee or a participating Radio Shack dealer for repair, along with a copy of the sales document or lease agreement. The original CUSTOMER'S sole and exclusive remedy in the event of a defect is limited to the correction of the defect by repair, replacement, or refund of the purchase price, at RADIO SHACK'S election and sole expense. RADIO SHACK has no obligation to replace or repair expendable items.
- B. RADIO SHACK makes no warranty as to the design, capability, capacity, or suitability for use of the Software, except as provided in this paragraph. Software is licensed on an "AS IS" basis, without warranty. The original CUSTOMER'S exclusive remedy, in the event of a Software manufacturing defect, is its repair or replacement within thirty (30) calendar days of the date of the Radio Shack sales document received upon license of the Software. The defective Software shall be returned to a Radio Shack Computer Center, a Radio Shack retail store, a participating Radio Shack franchisee or Radio Shack dealer along with the sales document.
- C. Except as provided herein no employee, agent, franchisee, dealer or other person is authorized to give any warranties of any nature on behalf of RADIO SHACK.
- D. **EXCEPT AS PROVIDED HEREIN, RADIO SHACK MAKES NO EXPRESS WARRANTIES, AND ANY IMPLIED WARRANTY OF MERCHANTABILITY OR FITNESS FOR A PARTICULAR PURPOSE IS LIMITED IN ITS DURATION TO THE DURATION OF THE WRITTEN LIMITED WARRANTIES SET FORTH HEREIN.**
- E. Some states do not allow limitations on how long an implied warranty lasts, so the above limitation(s) may not apply to CUSTOMER.

III. LIMITATION OF LIABILITY

- A. **EXCEPT AS PROVIDED HEREIN, RADIO SHACK SHALL HAVE NO LIABILITY OR RESPONSIBILITY TO CUSTOMER OR ANY OTHER PERSON OR ENTITY WITH RESPECT TO ANY LIABILITY, LOSS OR DAMAGE CAUSED OR ALLEGED TO BE CAUSED DIRECTLY OR INDIRECTLY BY "EQUIPMENT" OR "SOFTWARE" SOLD, LEASED, LICENSED OR FURNISHED BY RADIO SHACK, INCLUDING, BUT NOT LIMITED TO, ANY INTERRUPTION OF SERVICE, LOSS OF BUSINESS OR ANTICIPATORY PROFITS OR CONSEQUENTIAL DAMAGES RESULTING FROM THE USE OR OPERATION OF THE "EQUIPMENT" OR "SOFTWARE." IN NO EVENT SHALL RADIO SHACK BE LIABLE FOR LOSS OF PROFITS, OR ANY INDIRECT, SPECIAL, OR CONSEQUENTIAL DAMAGES ARISING OUT OF ANY BREACH OF THIS WARRANTY OR IN ANY MANNER ARISING OUT OF OR CONNECTED WITH THE SALE, LEASE, LICENSE, USE OR ANTICIPATED USE OF THE "EQUIPMENT" OR "SOFTWARE."** NOTWITHSTANDING THE ABOVE LIMITATIONS AND WARRANTIES, RADIO SHACK'S LIABILITY HEREUNDER FOR DAMAGES INCURRED BY CUSTOMER OR OTHERS SHALL NOT EXCEED THE AMOUNT PAID BY CUSTOMER FOR THE PARTICULAR "EQUIPMENT" OR "SOFTWARE" INVOLVED.
- B. RADIO SHACK shall not be liable for any damages caused by delay in delivering or furnishing Equipment and/or Software.
- C. No action arising out of any claimed breach of this Warranty or transactions under this Warranty may be brought more than two (2) years after the cause of action has accrued or more than four (4) years after the date of the Radio Shack sales document for the Equipment or Software, whichever first occurs.
- D. Some states do not allow the limitation or exclusion of incidental or consequential damages, so the above limitation(s) or exclusion(s) may not apply to CUSTOMER.

IV. SOFTWARE LICENSE

RADIO SHACK grants to CUSTOMER a non-exclusive, paid-up license to use the TANDY Software on **one** computer, subject to the following provisions:

- A. Except as otherwise provided in this Software License, applicable copyright laws shall apply to the Software.
- B. Title to the medium on which the Software is recorded (cassette and/or diskette) or stored (ROM) is transferred to CUSTOMER, but not title to the Software.
- C. CUSTOMER may use Software on a multiuser or network system only if either, the Software is expressly labeled to be for use on a multiuser or network system, or one copy of this software is purchased for each node or terminal on which Software is to be used simultaneously.
- D. CUSTOMER shall not use, make, manufacture, or reproduce copies of Software except for use on **one** computer and as is specifically provided in this Software License. Customer is expressly prohibited from disassembling the Software.
- E. CUSTOMER is permitted to make additional copies of the Software **only** for backup or archival purposes or if additional copies are required in the operation of **one** computer with the Software, but only to the extent the Software allows a backup copy to be made. However, for TRSDOS Software, CUSTOMER is permitted to make a limited number of additional copies for CUSTOMER'S own use.
- F. CUSTOMER may resell or distribute unmodified copies of the Software provided CUSTOMER has purchased one copy of the Software for each one sold or distributed. The provisions of this Software License shall also be applicable to third parties receiving copies of the Software from CUSTOMER.
- G. All copyright notices shall be retained on all copies of the Software.

V. APPLICABILITY OF WARRANTY

- A. The terms and conditions of this Warranty are applicable as between RADIO SHACK and CUSTOMER to either a sale of the Equipment and/or Software License to CUSTOMER or to a transaction whereby Radio Shack sells or conveys such Equipment to a third party for lease to CUSTOMER.
- B. The limitations of liability and Warranty provisions herein shall inure to the benefit of RADIO SHACK, the author, owner and/or licensor of the Software and any manufacturer of the Equipment sold by Radio Shack.

VI. STATE LAW RIGHTS

The warranties granted herein give the **original** CUSTOMER specific legal rights, and the **original** CUSTOMER may have other rights which vary from state to state.

RADIO SHACK
A Division of Tandy Corporation
Fort Worth, Texas 76102